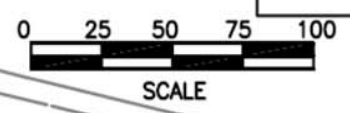
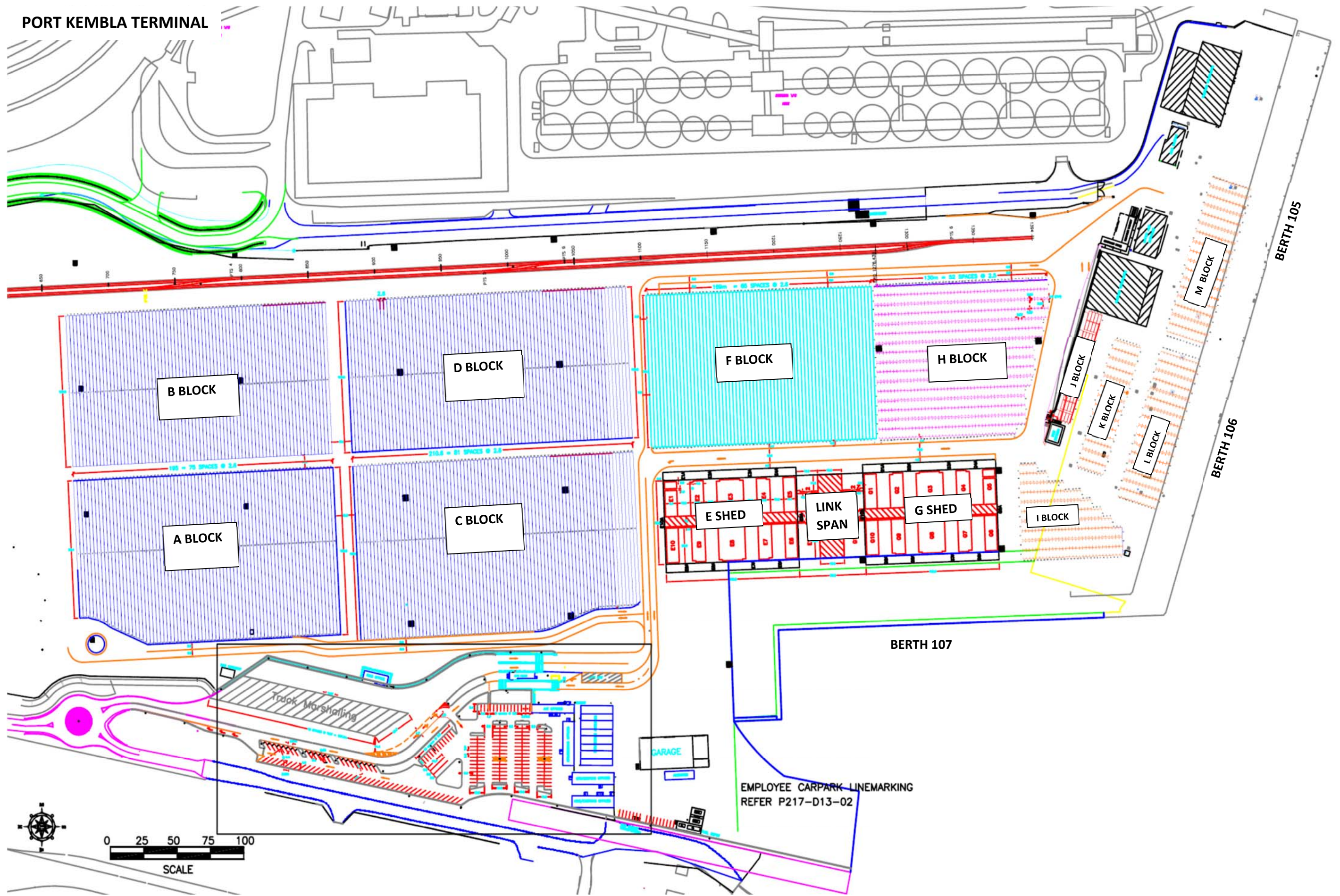


**PART B: TERMINAL LAYOUT PLAN FOR EACH TERMINAL**



PORT KEMBLA TERMINAL

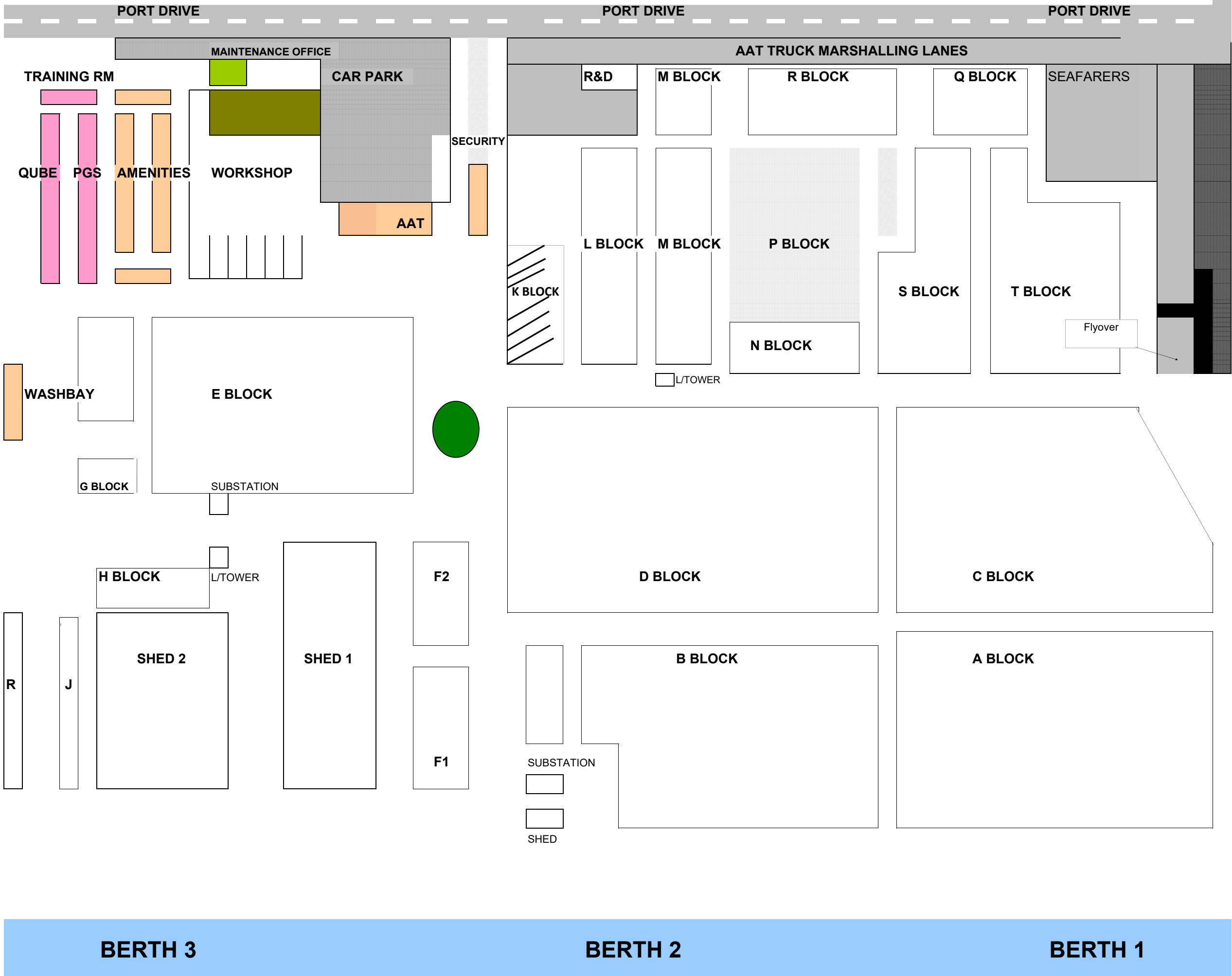


SCALE

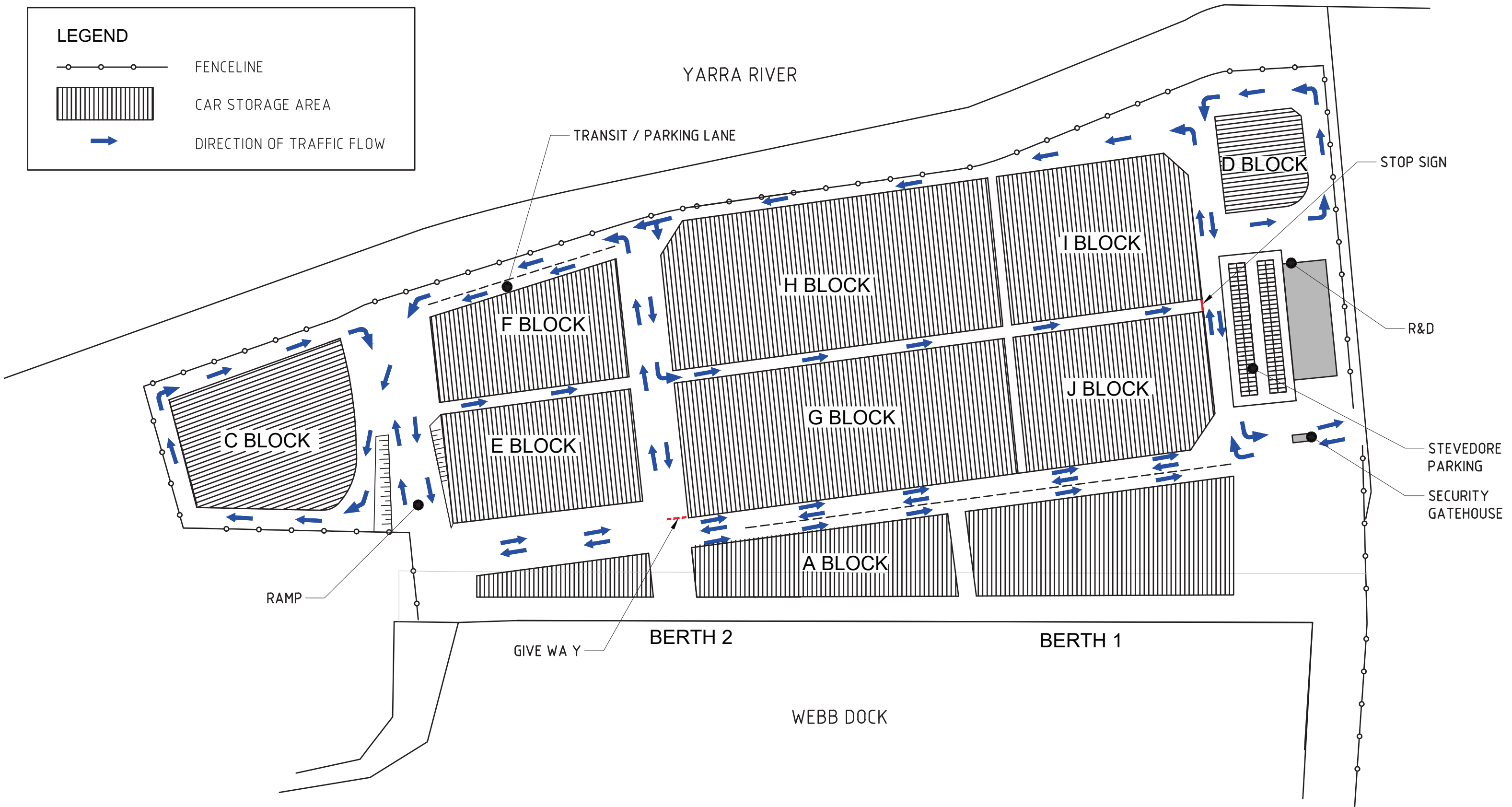
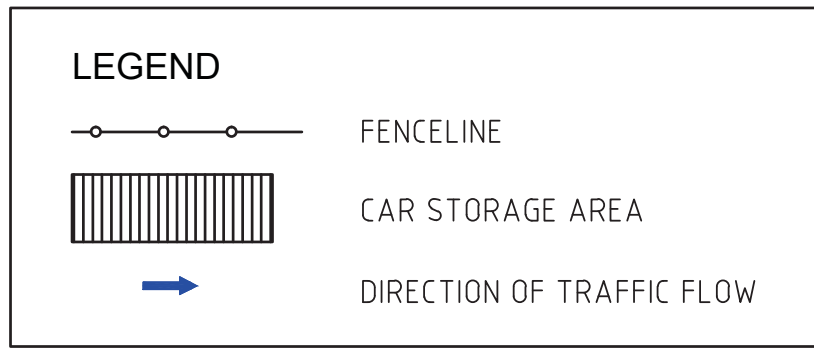
EMPLOYEE CARPARK LINEMARKING  
REFER P217-D13-02

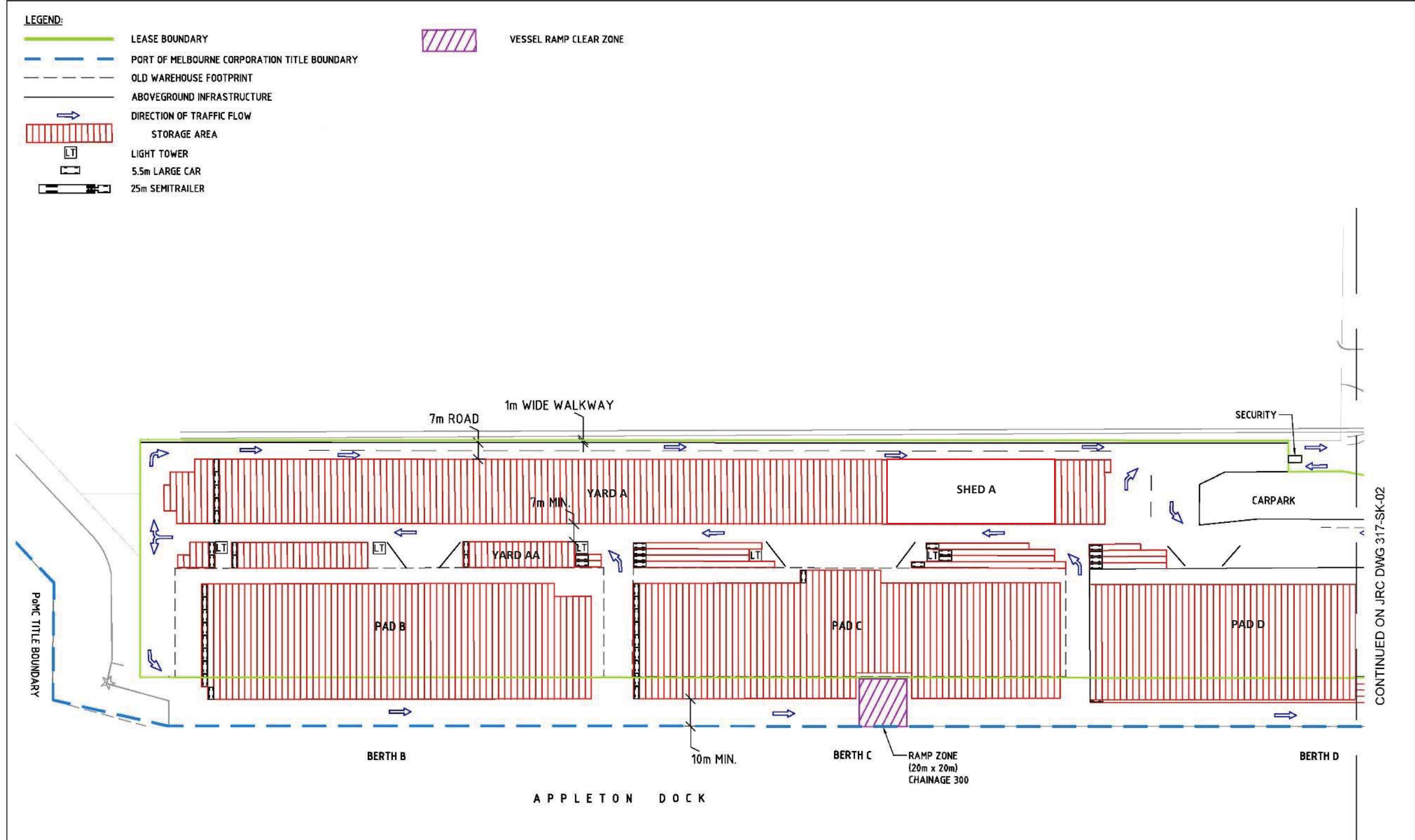


# AAT FISHERMAN ISLANDS - YARD LAYOUT



WEBB DOCK WEST TERMINAL





CONTINUED ON JRC DWG 317-SK-02

| REV | DATE     | REVISION DETAILS                               | BY | Ver. | App. |
|-----|----------|--|----|------|------|
| C   | 08/02/14 | CAR SPACES REMOVED AND SIZE ALTERED            | JO | CB   | DM   |
| B   | 21/01/14 | PAD B RAMP AMENDED, CAR PARKING SPACES REMOVED | JO | CB   | DM   |
| A   | 14/01/14 | DRAFT  | JO | CB   | DM   |

| Prepared By      | Signed       | Date     | Scale |
|------------------|--------------|----------|-------|
| JQ               | [Signature]  | 14/01/14 | A3    |
| Verified By      | Signed       | Date     |       |
| CB               | [Signature]  | 14/01/14 |       |
| Approved By      | Signed       | Date     |       |
| DM               | [Signature]  | 14/01/14 |       |
| Horizontal Datum | MGA (GDA 94) |          |       |
| Vertical Datum   | N/A          |          |       |



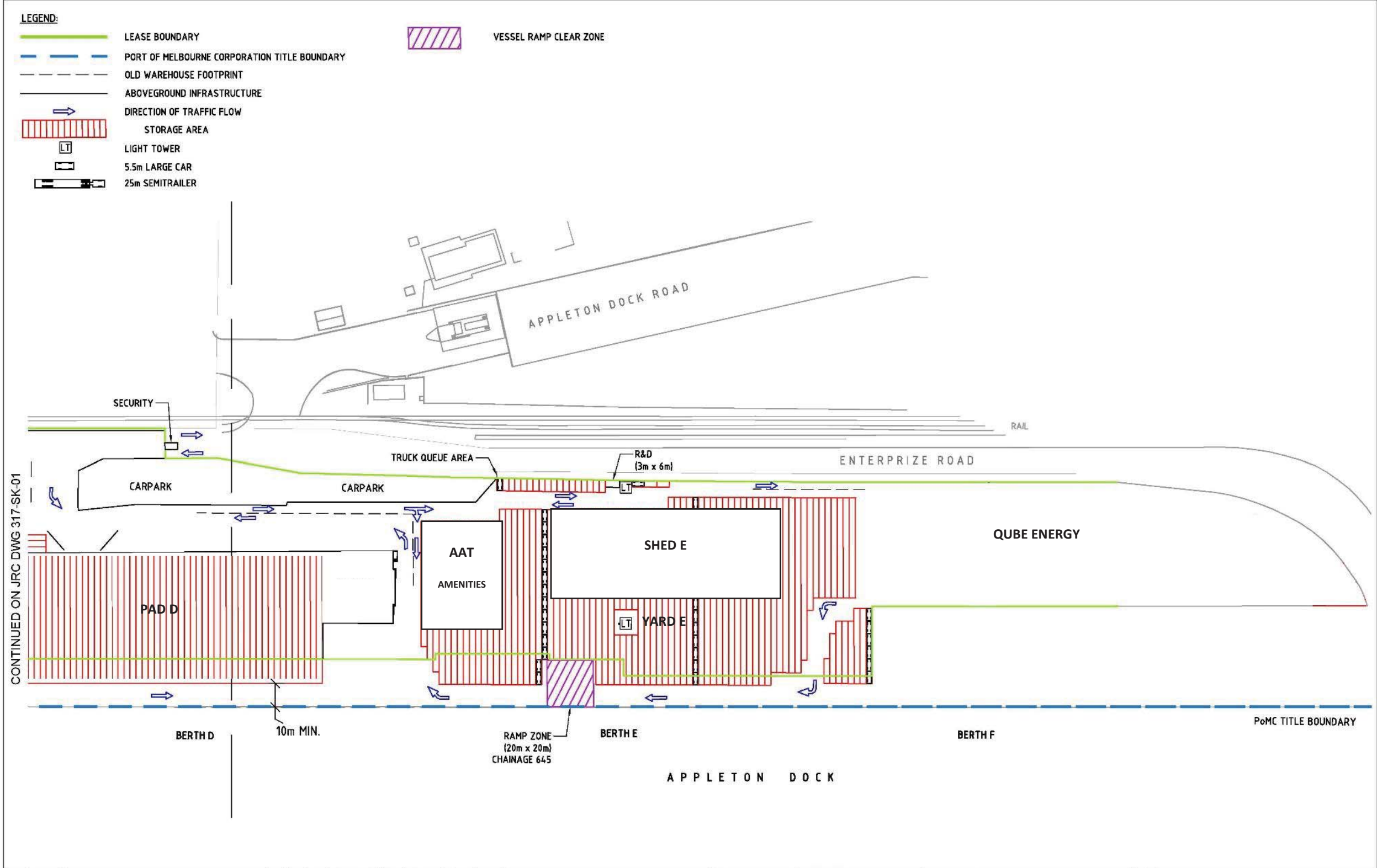
Client:

**JRC** James Rose Consulting  
 ABN 64 175 064 511  
 Unit F21, 1-15 Barr Street  
 BALMAIN NSW 2041  
 PH 02 9555 8588  
 FAX 02 9555 8599  
 mail@jamesrose.com.au  
 www.jamesrose.com.au

Project: AAT APPLETON DOCK

Drawing Title: OPERATIONAL LAYOUT (SHEET 1 OF 2)

| Status                  | Draft | Project No. | Drawing No. | Rev. |
|-------------------------|-------|-------------|-------------|------|
| © James Rose Consulting |       | 317         | 317-SK-01   | C    |



|                      |      |                  |        |       |             |                  |                      |           |         |    |   |  |
|----------------------|------|------------------|--------|-------|-------------|------------------|----------------------|-----------|---------|----|---|--|
| REV                  | DATE | REVISION DETAILS | BY     | Ver.  | App.        | Prepared By      | Signed               | Date      | Scale   | A3 |   |  |
|                      |      |                  |        |       |             | JQ               | CB                   | DM        |         |    |   |  |
|                      |      |                  |        |       |             | JQ               | CB                   | DM        |         |    |   |  |
|                      |      |                  |        |       |             | JQ               | CB                   | DM        |         |    |   |  |
| REVISIONS AND ISSUES |      |                  |        |       |             | Horizontal Datum | MGA (GDA 94) ZONE 55 |           | Client: |    | James Rose Consulting<br>ABN 64 175 064 511<br>Unit F21, 1-15 Barr Street<br>BALMAIN NSW 2041<br>PH 02 9555 8588<br>FAX 02 9555 8599<br>mail@jamesrose.com.au<br>www.jamesrose.com.au | Project<br><b>AAT APPLETON DOCK</b><br><br>Drawing Title<br><b>OPERATIONAL LAYOUT (SHEET 2 OF 2)</b> |
| Vertical Datum       | N/A  |                  | Status | Draft | Project No. | 317              | Drawing No.          | 317-SK-02 |         |    |   |  |